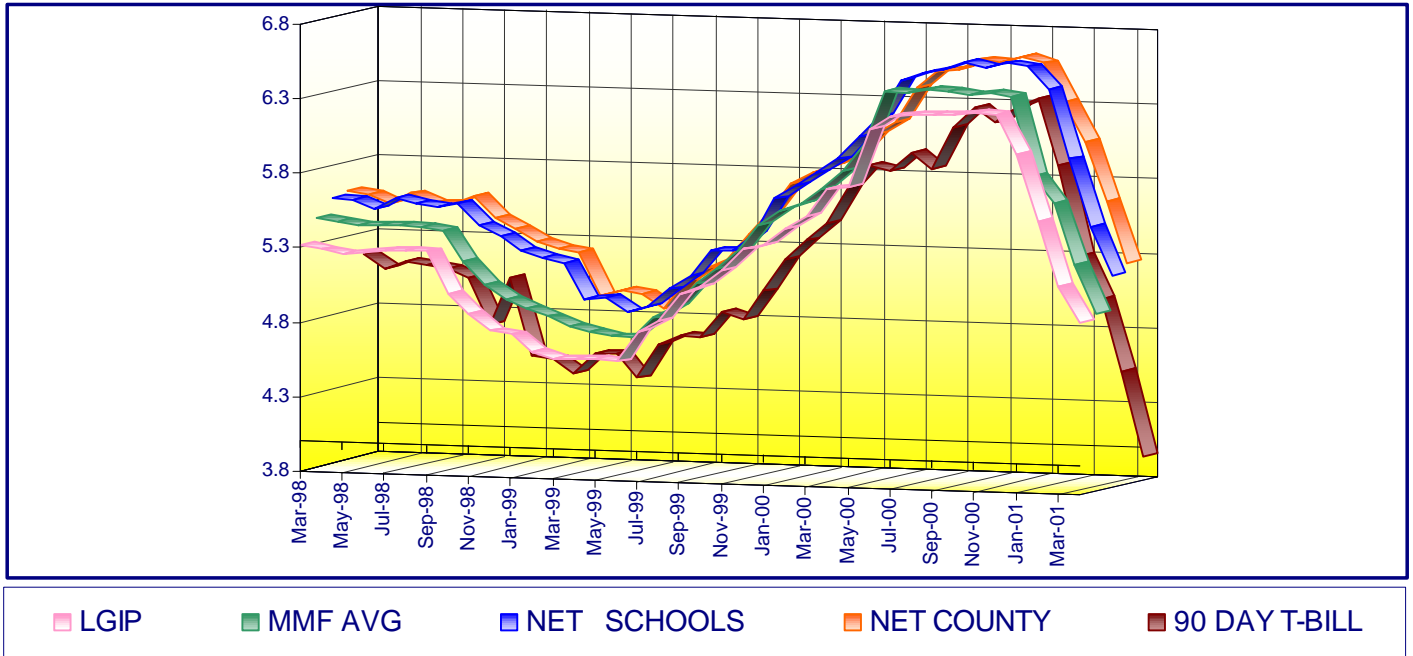
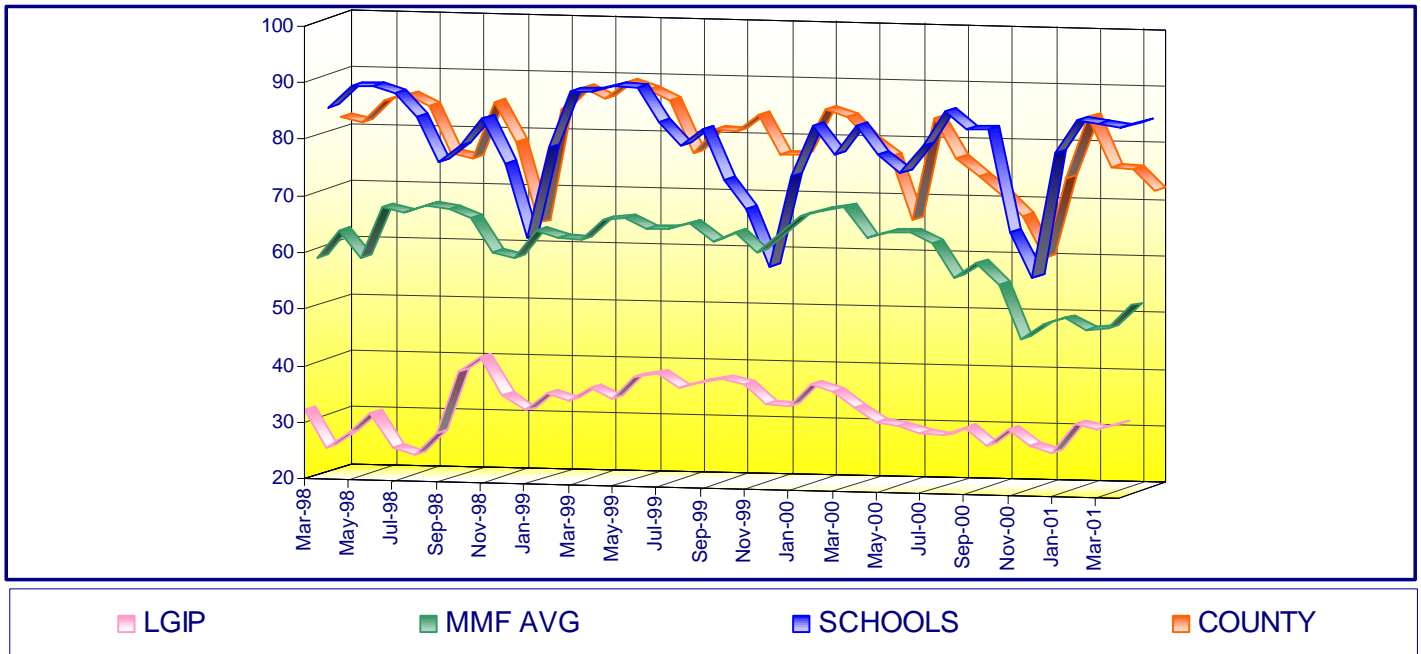


ORANGE COUNTY MONEY MARKET POOLS vs BENCHMARKS (YIELD)
 For The Period March 1998 to April, 2001

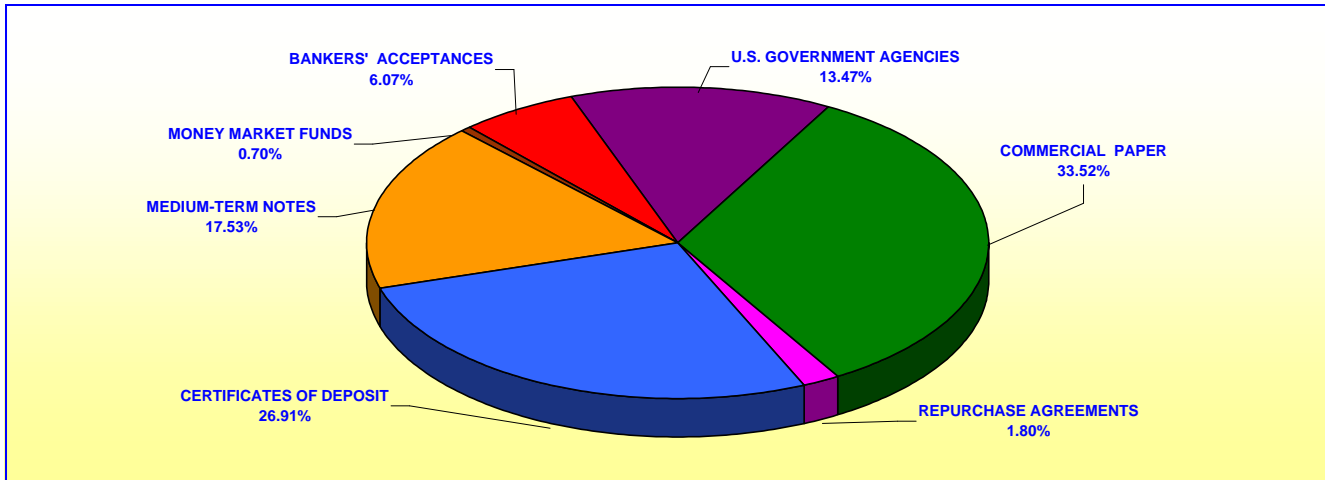


ORANGE COUNTY MONEY MARKET POOLS vs BENCHMARKS (WAM)
 For The Period March 1998 to April, 2001

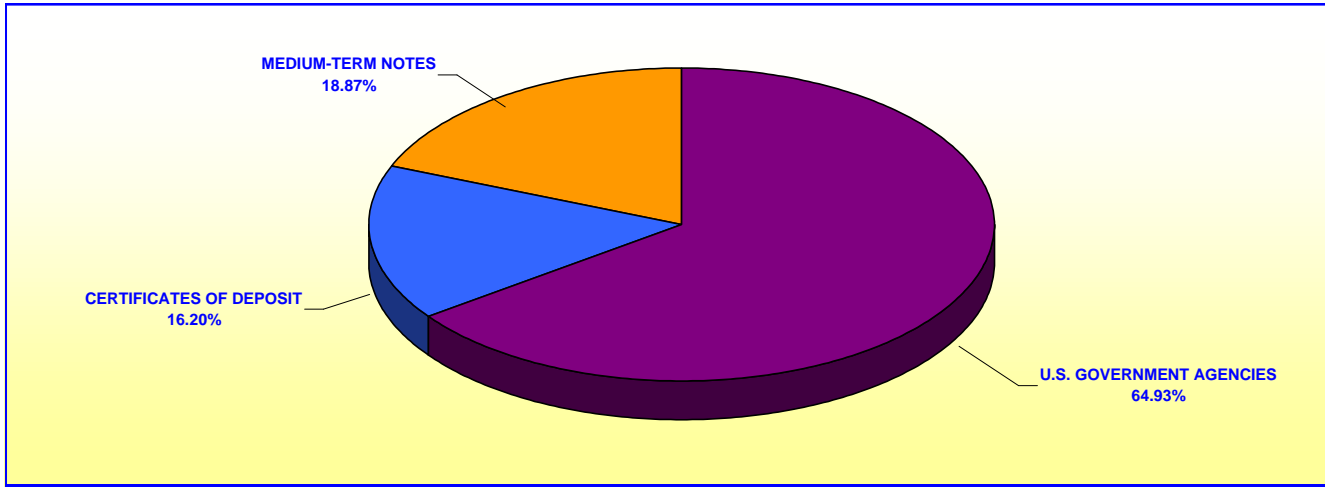


**ORANGE COUNTY TREASURER - TAX COLLECTOR
ORANGE COUNTY INVESTMENT POOL
PORTFOLIO COMPOSITION - BY FUND****

April 30, 2001



MONEY MARKET FUND	
In Thousands	
U.S. GOVERNMENT AGENCIES	\$300,175
COMMERCIAL PAPER	746,721
REPURCHASE AGREEMENTS	40,000
CERTIFICATES OF DEPOSIT	599,512
MEDIUM-TERM NOTES	390,494
MONEY MARKET FUNDS	15,597
BANKERS' ACCEPTANCES	135,179
TOTAL	<u>\$2,227,678</u>

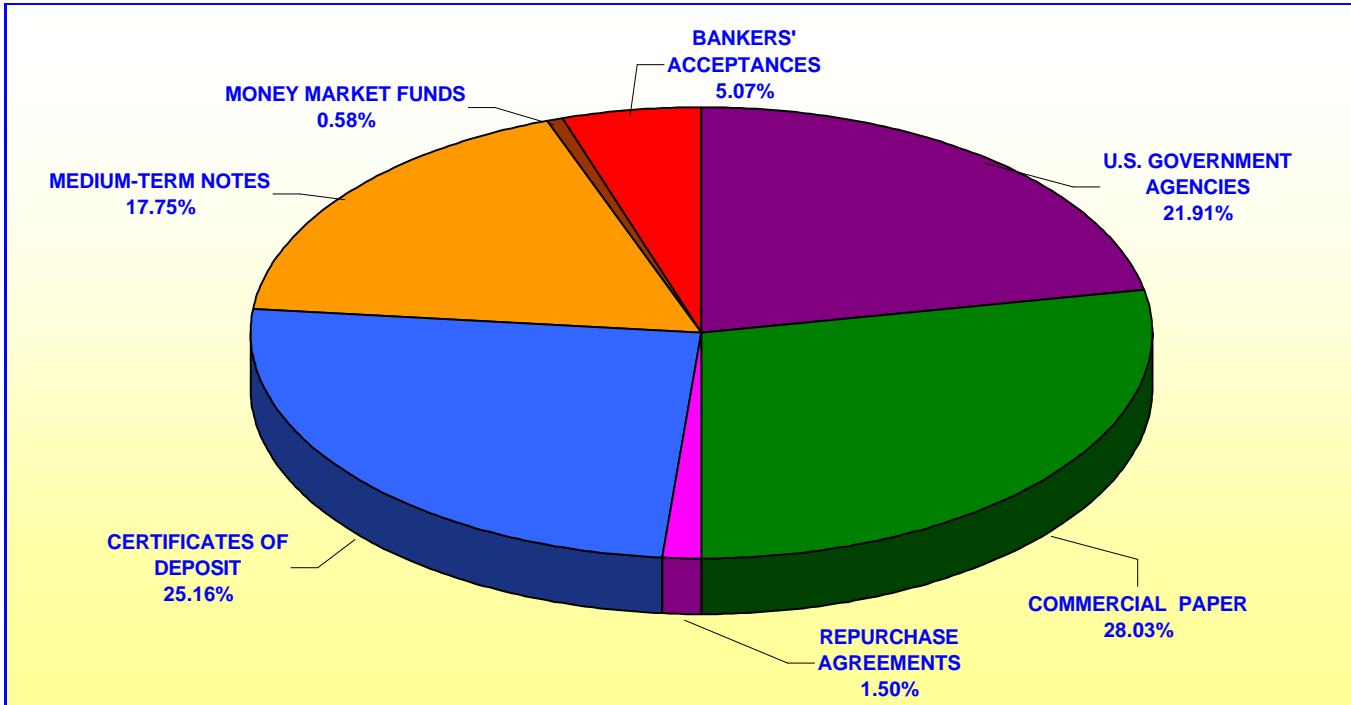


EXTENDED FUND	
In Thousands	
U.S. GOVERNMENT AGENCIES	\$283,526
CERTIFICATES OF DEPOSIT	70,760
MEDIUM -TERM NOTES	82,411
TOTAL	<u>\$436,697</u>

Investment Composition Is In Compliance With The Orange County Treasurer's Investment Policy Statement

*** Calculated Based Upon Market Value at 4/30/2001*

ORANGE COUNTY TREASURER - TAX COLLECTOR
ORANGE COUNTY INVESTMENT POOL
PORTFOLIO COMPOSITION - COMBINED **
April 30, 2001



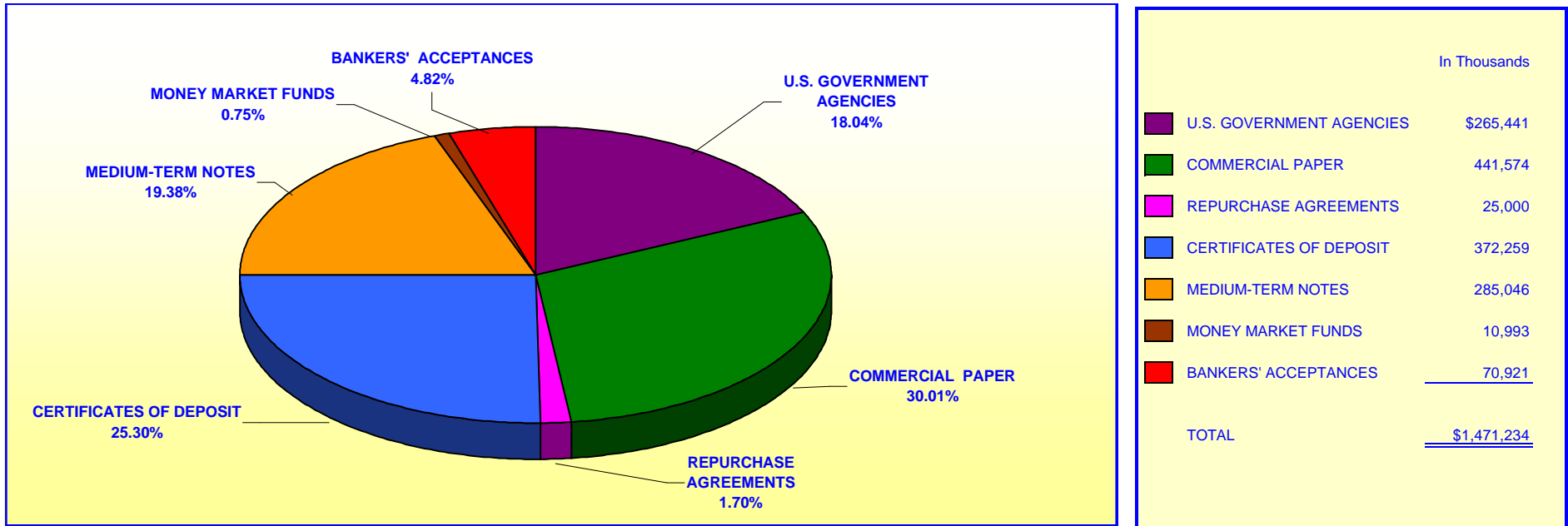
	In Thousands
U.S. GOVERNMENT AGENCIES	\$583,701
COMMERCIAL PAPER	746,721
REPURCHASE AGREEMENTS	40,000
CERTIFICATES OF DEPOSIT	670,272
MEDIUM-TERM NOTES	472,905
MONEY MARKET FUNDS	15,597
BANKERS' ACCEPTANCES	<u>135,179</u>
TOTAL	<u>\$2,664,375</u>

Investment Composition Is In Compliance With The Orange County Treasurer's Investment Policy Statement

*** Calculated Based Upon Market Value at 4/30/2001*

**ORANGE COUNTY TREASURER - TAX COLLECTOR
ORANGE COUNTY EDUCATIONAL INVESTMENT POOL
PORTFOLIO COMPOSITION ****

April 30, 2001

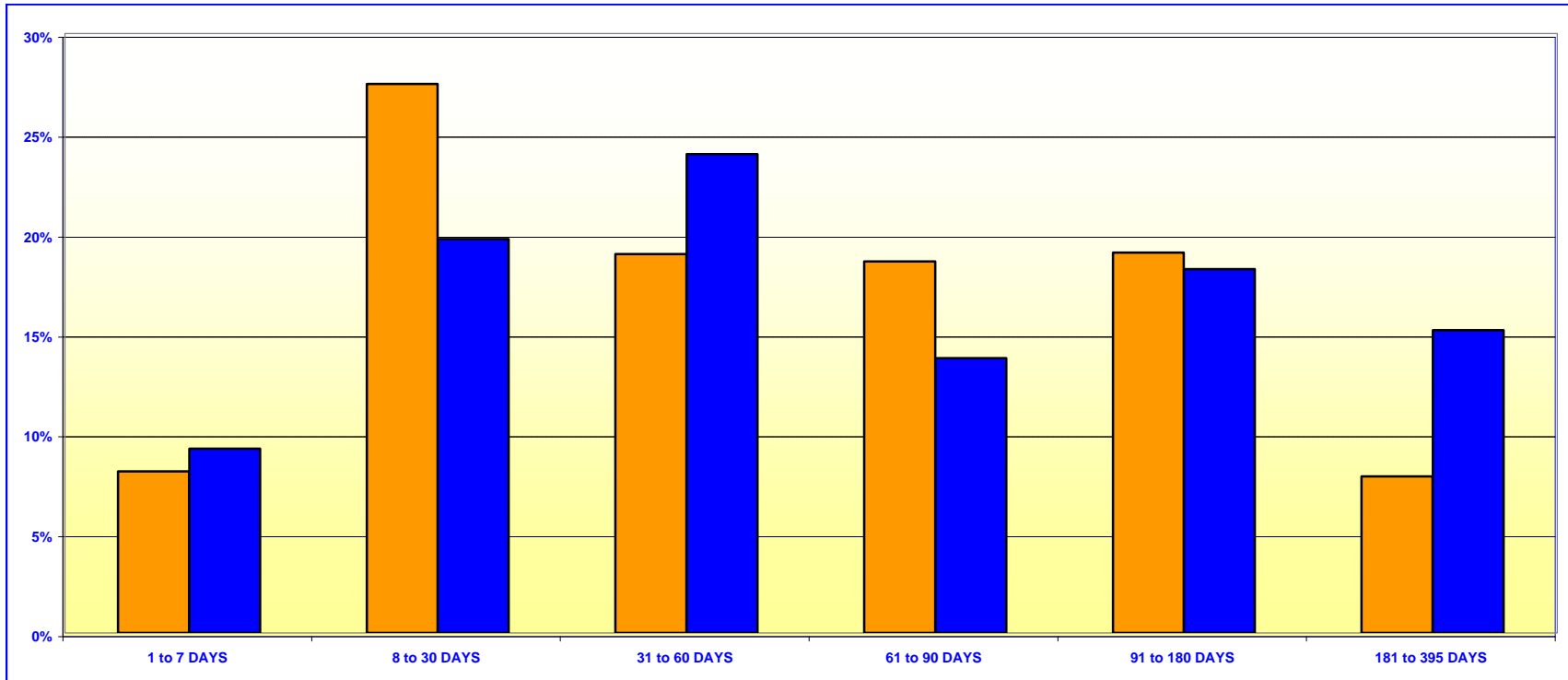


Investment Composition Is In Compliance With The Orange County Treasurer's Investment Policy Statement

** Calculated Based Upon Market Value at 4/30/2001

ORANGE COUNTY TREASURER - TAX COLLECTOR
ORANGE COUNTY MONEY MARKET FUND AND EDUCATIONAL INVESTMENT POOL
MATURITIES DISTRIBUTION AT COST

April 30, 2001



O.C. INVESTMENT POOL MONEY MARKET FUND		
	In Thousands	%
1 TO 7 DAYS	\$179,642	8.08%
8 TO 30 DAYS	610,711	27.47%
31 TO 60 DAYS	421,584	18.97%
61 TO 90 DAYS	413,355	18.60%
91 TO 180 DAYS	423,124	19.04%
181 TO 395 DAYS	174,302	7.84%
TOTAL	\$2,222,718	100.00%

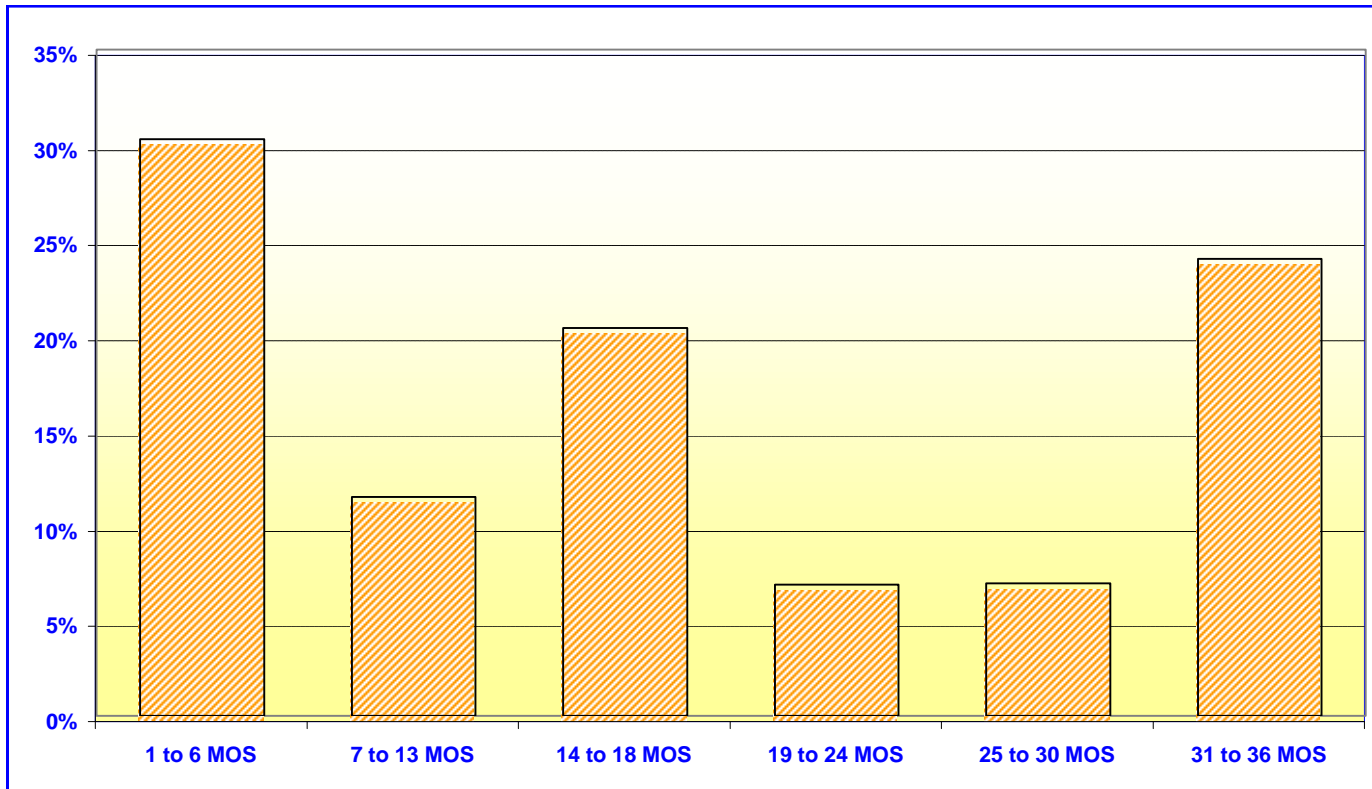
O.C. EDUCATIONAL INVESTMENT POOL		
	In Thousands	%
1 TO 7 DAYS	\$135,569	9.22%
8 TO 30 DAYS	289,908	19.71%
31 TO 60 DAYS	352,471	23.96%
61 TO 90 DAYS	202,187	13.75%
91 TO 180 DAYS	267,775	18.20%
181 TO 395 DAYS	223,001	15.16%
TOTAL	\$1,470,911	100.00%

Maturity Limits Are In Compliance With The Orange County Treasurer's Investment Policy Statement

Floating Rate Notes are deemed to have a maturity date equal to their next interest reset date.
 At April 30, 2001, Floating Rate Notes comprise 5.85% and 5.10% of the O.C. Money Market Fund and Educational Investment Pool, respectively.

ORANGE COUNTY TREASURER - TAX COLLECTOR
ORANGE COUNTY INVESTMENT POOL - EXTENDED FUND
MATURITIES DISTRIBUTION AT COST

April 30, 2001

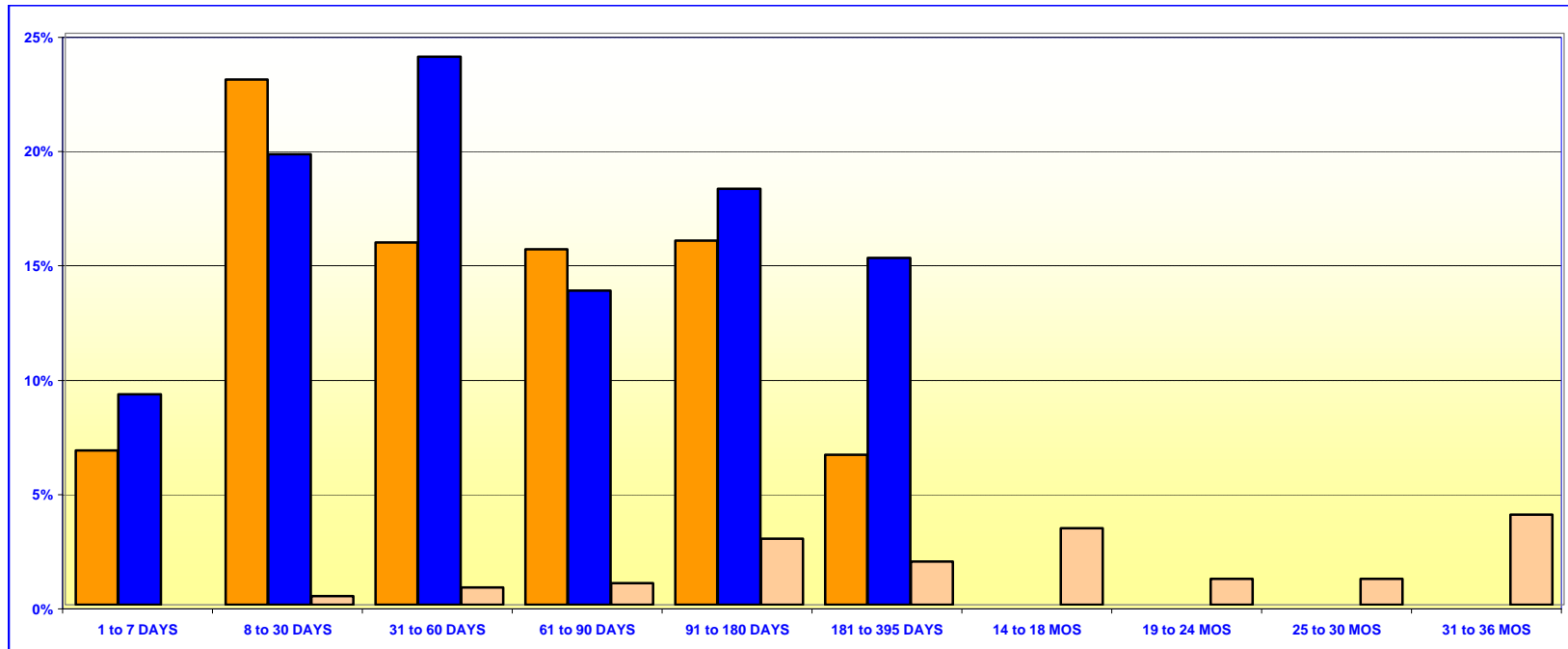


O.C. INVESTMENT POOL EXTENDED FUND		
	In Thousands	%
1 TO 6 MOS	\$131,777	30.28%
7 TO 12 MOS	50,000	11.49%
13 TO 16 MOS	88,694	20.38%
18 TO 24 MOS	29,986	6.89%
25 TO 30 MOS	30,289	6.96%
31 TO 36 MOS	<u>104,456</u>	<u>24.00%</u>
TOTAL	<u>\$435,202</u>	<u>100.00%</u>

Maturity Limits Are In Compliance With The Orange County Treasurer's Investment Policy Statement

Floating Rate Notes are deemed to have a maturity date equal to their next interest reset date.
 At April 30, 2001, Floating Rate Notes comprise 3.41% of the O.C. Extended Fund

ORANGE COUNTY TREASURER - TAX COLLECTOR
ORANGE COUNTY AND EDUCATIONAL INVESTMENT POOLS
MATURITIES DISTRIBUTION AT COST
April 30, 2001



O.C. INVESTMENT POOL				
			In Thousands	%
Money Market Fund	1 TO 7 DAYS		\$179,642	6.76%
Money Market Fund	8 TO 30 DAYS		610,710	22.98%
Money Market Fund	31 TO 60 DAYS		421,584	15.86%
Money Market Fund	61 TO 90 DAYS		413,355	15.55%
Money Market Fund	91 TO 180 DAYS		423,124	15.92%
Money Market Fund	181 TO 395 DAYS		174,302	6.56%
Extended Fund	1 TO 7 DAYS		0	0.00%
Extended Fund	8 TO 30 DAYS		9,963	0.37%
Extended Fund	31 TO 60 DAYS		19,816	0.74%
Extended Fund	61 TO 90 DAYS		25,004	0.94%
Extended Fund	91 TO 180 DAYS		76,994	2.90%
Extended Fund	181 TO 395 DAYS		50,000	1.88%
Extended Fund	14 TO 18 MONTHS		88,695	3.34%
Extended Fund	19 TO 24 MONTHS		29,986	1.13%
Extended Fund	25 TO 30 MONTHS		30,289	1.14%
Extended Fund	31 TO 36 MONTHS		104,456	3.93%
TOTAL			\$2,657,920	100.00%

O.C. EDUCATIONAL INVESTMENT POOL		
	In Thousands	%
1 TO 7 DAYS	\$135,569	9.22%
8 TO 30 DAYS	289,908	19.71%
31 TO 60 DAYS	352,471	23.96%
61 TO 90 DAYS	202,187	13.75%
91 TO 180 DAYS	267,775	18.20%
181 TO 395 DAYS	223,001	15.16%
TOTAL		100.00%

Maturity Limits Are In Compliance With The Orange County Treasurer's Investment Policy Statement

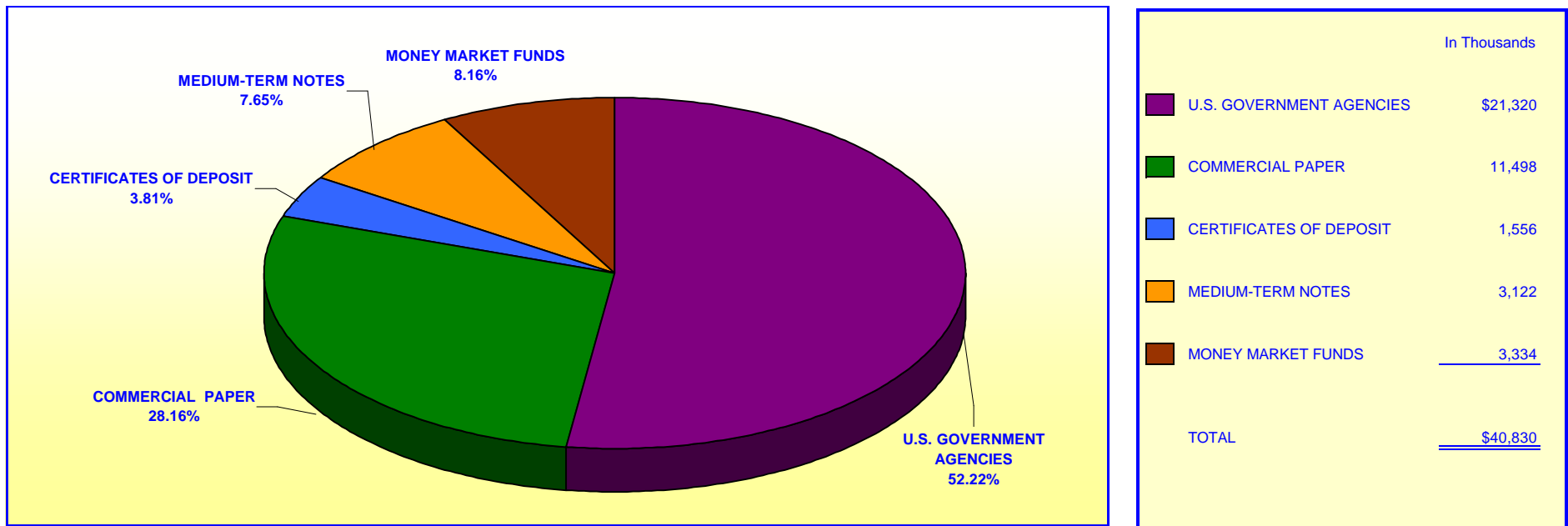
Floating Rate Notes are deemed to have a maturity date equal to their next interest reset date.
 At April 30, 2001, Floating Rate Notes comprise 5.45% and 5.10% of the O.C. Investment Pool and Educational Investment Pool, respectively.

ORANGE COUNTY TREASURER - TAX COLLECTOR

JOHN WAYNE AIRPORT INVESTMENT POOL

PORTFOLIO COMPOSITION **

April 30, 2001

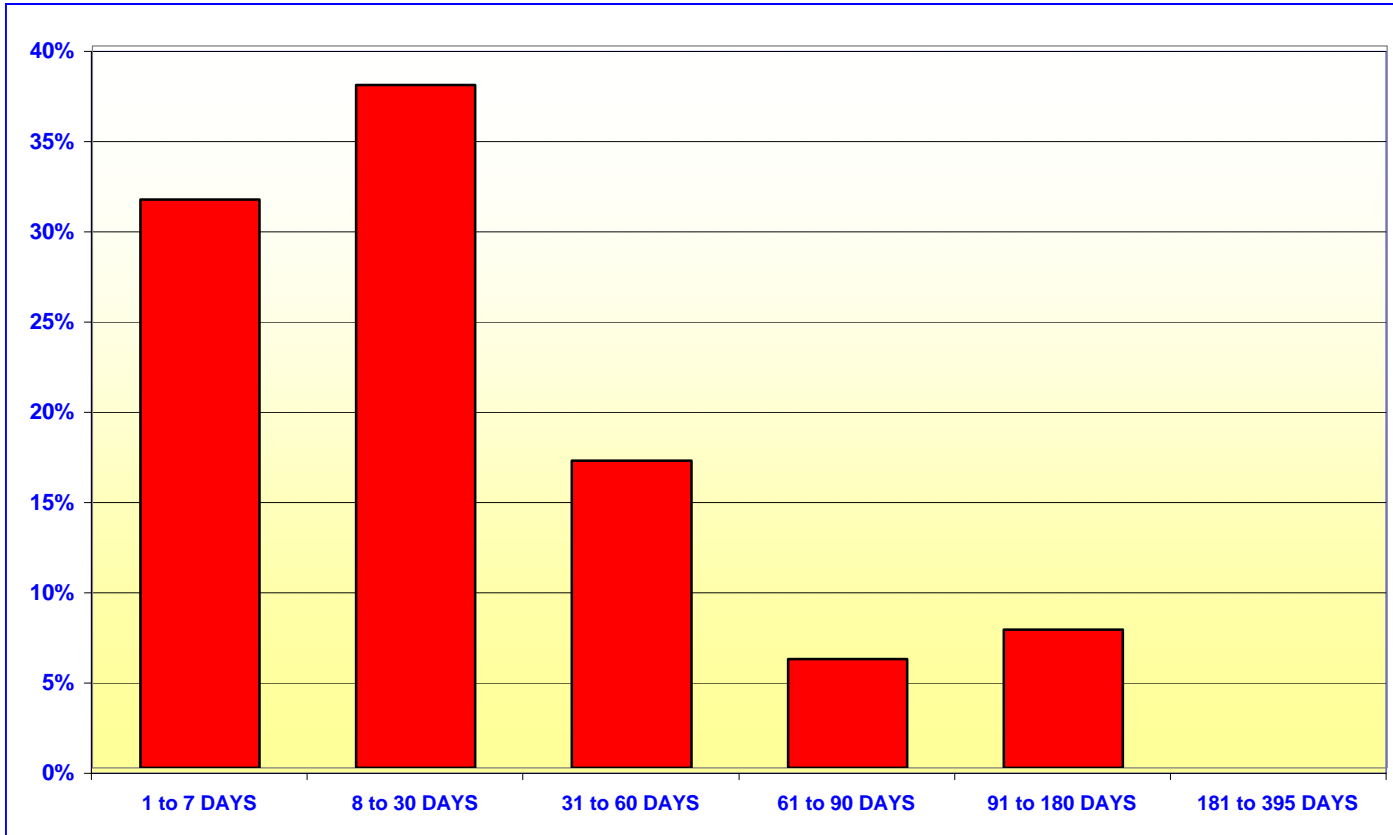


Investment Composition Is In Compliance With The Orange County Treasurer's Investment Policy Statement

*** Calculated Based Upon Market Value at 4/30/01*

ORANGE COUNTY TREASURER - TAX COLLECTOR
JOHN WAYNE AIRPORT INVESTMENT POOL
MATURITIES DISTRIBUTION AT COST

April 30, 2001



JOHN WAYNE AIRPORT		
	In Thousands	%
1 TO 7 DAYS	\$12,815	31.48%
8 TO 30 DAYS	15,404	37.83%
31 TO 60 DAYS	6,926	17.01%
61 TO 90 DAYS	2,458	6.04%
91 TO 180 DAYS	3,112	7.64%
181 to 395 DAYS	<u>0</u>	<u>0.00%</u>
TOTAL	<u>\$40,715</u>	<u>100.00%</u>

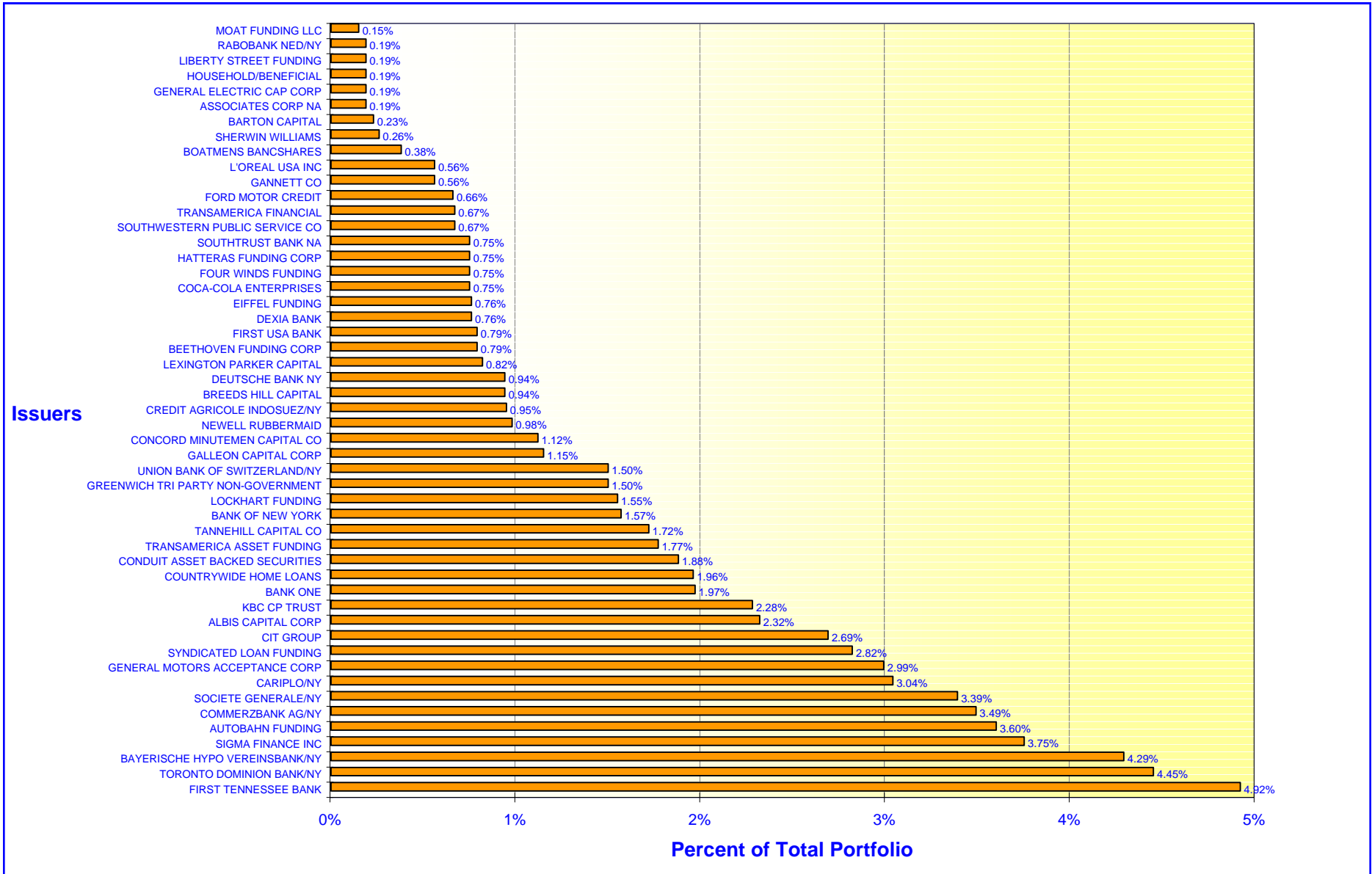
Maturity Limits Are In Compliance With The Orange County Treasurer's Investment Policy Statement

Floating Rate Notes are deemed to have a maturity date equal to their next interest reset date.
 At April 30, 2001, Floating Rate Notes comprise 12.28% of the John Wayne Airport Investment Pool

ORANGE COUNTY TREASURER - TAX COLLECTOR

ORANGE COUNTY INVESTMENT POOL - ISSUER CONCENTRATION

April 30, 2001



ORANGE COUNTY TREASURER - TAX COLLECTOR

EDUCATIONAL INVESTMENT POOL - ISSUER CONCENTRATION

April 30, 2001

